



750 Garcia Ave, Pittsburg
CA 94565
+1.925.427.7800
HSIheadwalls.com

Patient Support

HSI offers Patient Support accessories and secondary equipment including IV and Infusion Support, Sharps Mounts, Suction Canister brackets, Sphygmomanometer and more. Items are compatible with Ohio, Hill-Rom, Amico, Modular, Paladin, Eastern Rail, Nexspan and Fairfield rails.



Single IV Hook, 18"

Clamp On #605201

Double IV Hook, 28"

Clamp On #605202

For use with Eclipse™ Horizontal Equipment Rail #050453
And F Type Eclipse™ Equipment Rail #050469



Single IV Hook, 18"

Unimount #505201

Double IV Hook, 28"

Unimount #505202

For use with Unimount™ Vertical Equipment Track #050466



Single IV Hook, 18"

MA Rail Mount #705201

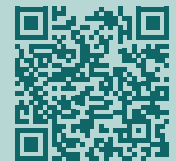
Double IV Hook, 28"

MA Rail Mount #705202

For use with MA Horizontal Equipment Rail #050443



750 Garcia Ave,
Pittsburg
CA 94565
+1.925.427.7800





750 Garcia Ave,
Pittsburg
CA 94565
+1.925.427.7800



IV Pole, 3-Hooks
Clamp On

#605000 – 12" Pole
#605001 – 24" Pole with 18" extension (shown)

For use with Eclipse™ Horizontal Equipment Rail # 050453
And F Type Eclipse™ Equipment Rail # 050469

IV Pole, 3-Hooks
MA Rail Mount

#705000 – 12" Extension
#705001 – 24" Extension

For use with MA Horizontal Equipment Rail # 050443



IV Pole, 3-Hooks
Unimount™

#505000 – 12" Pole (shown)
#505001 – 24" Pole with 18" extension

For use with Unimount™ Vertical Equipment Track # 050466

Infusion Support, Dual 6-Hooks

Clamp On

#605105 - 30" Poles with 27" extension

For use with Eclipse™ Horizontal Equipment Rail #050453
And F Type Eclipse™ Equipment Rail # 050469



Infusion Support, Dual 8-Hooks

Clamp On

#605103 - 30" Poles with 27" extension

For use with Eclipse™ Horizontal Equipment Rail #050453
And F Type Eclipse™ Equipment Rail # 050469



Infusion Support, Dual 8-Hooks

Unimount

#505103 - 30" Poles with 27" extension

For use with Unimount™ Vertical Equipment Track # 050466



750 Garcia Ave,
Pittsburg
CA 94565
+1.925.427.7800





750 Garcia Ave,
Pittsburg
CA 94565
+1.925.427.7800



Exergen Thermometer Mounting Plate

Mounts Exergen TAT-5000 Thermometer Temporal Scanner

Eclipse Rail Mounted 606106

MA Rail Mounted 706106

IV Pole, 3-Hooks

MA Rail Mount

#705000 – 12" Extension

#705001 – 24" Extension

For use with MA Horizontal Equipment Rail # 050443



IV Pole, 3-Hooks

Unimount™

#505000 – 12" Pole (shown)

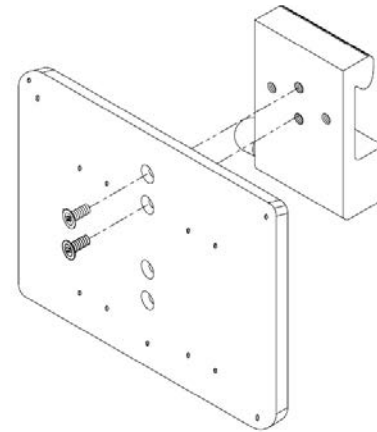
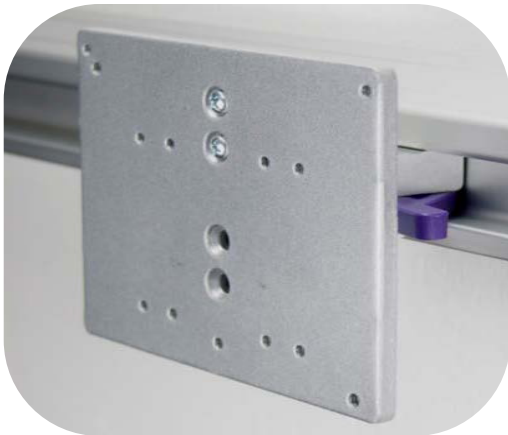
#505001 – 24" Pole with 18" extension

For use with Unimount™ Vertical Equipment Track # 050466

Universal Mounting Bracket Clamp On

#606101

Accepts Sphygmomanometers and Thermometers
For use with Eclipse™ Horizontal Equipment Rail # 050453
And F Type Eclipse™ Equipment Rail # 050469



Universal Mounting Bracket MA Rail Mount

#706101

Accepts Sphygmomanometers and Thermometers
For use with MA Horizontal Equipment Rail #050433



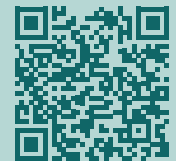
Universal Mounting Bracket Ohio Rail Mount

#806101

Accepts Sphygmomanometers and Thermometers
For use with Ohio/Ohmeda Equipment Rail # 050511



750 Garcia Ave,
Pittsburg
CA 94565
+1.925.427.7800





750 Garcia Ave,
Pittsburg
CA 94565
+1.925.427.7800



Sphygmomanometer Basket Clamp On

#606104

For use with Eclipse™ Horizontal Equipment Rail # 050453
And F Type Eclipse™ Equipment Rail # 050469

Sphygmomanometer Basket MA Rail Mount

#706104

For use with MA Horizontal Equipment Rail # 050443



Sphygmomanometer Basket Ohio Rail Mount

#806104

For use with Ohio/Ohmeda Horizontal Equipment Rail #050511

Sphygmomanometer, Aneroid with Cuff Basket

#909730

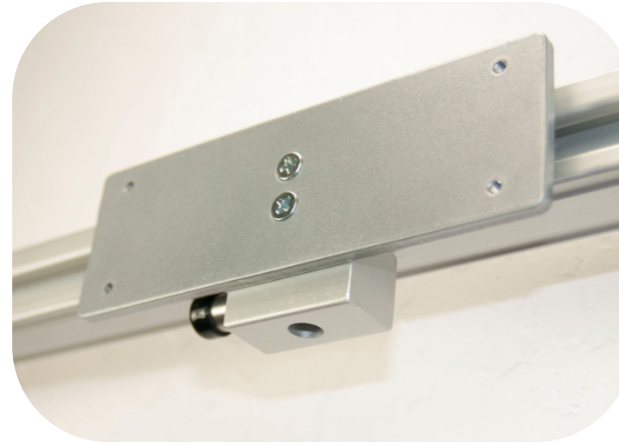
Available for mounting to all HSI horizontal rails



Ophthalmoscope Mount Clamp On

#606200

For use with Eclipse™ Horizontal Equipment Rail # 050453
And F Type Eclipse™ Equipment Rail # 050469



Ophthalmoscope Mount MA Rail Mount

#706200

For use with MA Horizontal Equipment Rail # 050443



Ophthalmoscope Mount Ohio Rail Mount

#806200

For use with Ohio/Ohmeda Horizontal Equipment Rail
#050511



750 Garcia Ave,
Pittsburg
CA 94565
+1.925.427.7800





750 Garcia Ave,
Pittsburg
CA 94565
+1.925.427.7800



Ophthalmoscope Mount Clamp On

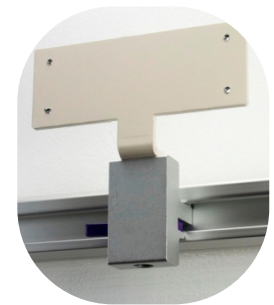
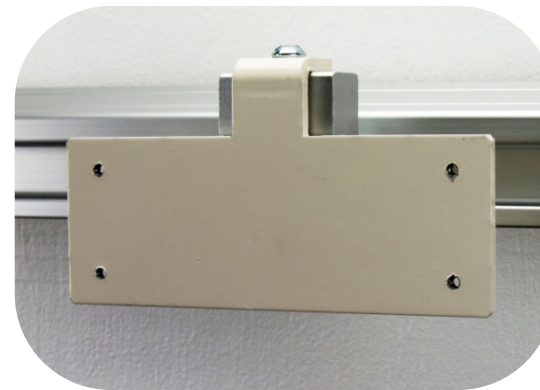
#606200

For use with Eclipse™ Horizontal Equipment Rail #050453 And F Type Eclipse™ Equipment Rail # 050469

Ophthalmoscope Mount MA Rail Mount

#706200

For use with MA Horizontal Equipment Rail # 050443



Ophthalmoscope Mount Unimount

#506200

For use with Unimount™ Vertical Equipment Track #050466

**Sharps Container Holder
Rapid Mount**

#614101

For use with Eclipse™ Horizontal Equipment Rail #050453

**Sharps Container Holder
Clamp On**

#604101

For use with Eclipse™ Horizontal Equipment Rail # 050453
And F Type Eclipse™ Equipment Rail # 050469

**Sharps Container Holder
MA Rail Mount**

#704101

For use with MA Horizontal Equipment Rail # 050443

**Sharps Container Holder
Ohio Rail Mount**

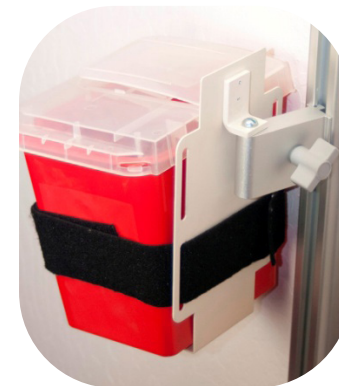
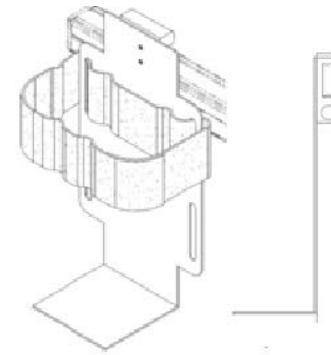
804101

For use with Ohio/Ohmeda Horizontal Equipment Rail #050511

**Sharps Container Holder
Unimount**

#504101

For use with Unimount™ Vertical Equipment Track #050466



750 Garcia Ave,
Pittsburg
CA 94565
+1.925.427.7800





750 Garcia Ave,
Pittsburg
CA 94565
+1.925.427.7800



Vacuum Bottle Slide Rapid Mount

#613600

For use with Eclipse™ Horizontal Equipment Rail #050453

Vacuum Bottle Slide Clamp On

#603600

For use with Eclipse™ Horizontal Equipment Rail # 050453
And F Type Eclipse™ Equipment Rail # 050469



Vacuum Bottle Slide MA Rail Mount

#703600

For use with MA Horizontal Equipment Rail # 050443



Vacuum Bottle Slide Unimount

#503600

For use with Unimount™ Vertical Equipment Track #050466
And F Type Eclipse™ Equipment Rail # 050469



Vacuum Bottle Slide Ohio Rail Mount

803600

For use with Ohio/Ohmeda Horizontal Equipment Rail #050511

**Blender Bracket
Rapid Mount**

#613601

For use with Eclipse™ Horizontal Equipment Rail #050453



**Blender Bracket
MA Rail Mount**

#703601

For use with MA Horizontal Equipment Rail # 050443

**Blender Bracket
Ohio Rail Mount**

803601

For use with Ohio/Ohmeda Horizontal Equipment Rail #050511



**Blender Bracket
Clamp On**

#603601

For use with Eclipse™ Horizontal Equipment Rail # 050453
And F Type Eclipse™ Equipment Rail # 050469



**Blender Bracket
Unimount**

#503601

For use with Unimount™ Vertical Equipment Track #050466



750 Garcia Ave,
Pittsburg
CA 94565
+1.925.427.7800





750 Garcia Ave,
Pittsburg
CA 94565
+1.925.427.7800



**Resuscitation/Ambu Bag Holder
Clamp On**
#613300

**Resuscitation/Ambu Bag Holder
Rapid Mount**
#613300

For use with Eclipse™ Horizontal Equipment Rail #050453

For use with Eclipse™ Horizontal Equipment Rail # 050453
And F Type Eclipse™ Equipment Rail # 050469

**Resuscitation/Ambu Bag Holder
Clamp On**
#703300

For use with MA Horizontal Equipment Rail # 050443

**Resuscitation/Ambu Bag Holder
Clamp On**
803300

For use with Ohio/Ohmeda Horizontal Equipment Rail #050511



**Resuscitation/Ambu Bag Holder
Unimount**
#503300

For use with Unimount™ Vertical Equipment Track #050466

